



Exceptional Multi-Specialty Coverage Via Telemedicine

24-Hour-A-Day Coverage to Hospitals



Questcare Telehealth uses technology to enhance patient care in multiple medical settings, including emergency rooms and intensive care units. Questcare Telehealth employs outstanding providers to meet the needs of our patients and hospital partners. As part of a multidisciplinary practice, Questcare can leverage advances in technology to tailor telemedicine programs for virtually any specialty. Questcare Telehealth is a division of Questcare Medical Services, PLLC, an Envision Healthcare company.

Contact us today: 1.800.369.8397 • info@questcare.com

QUALITY CARE. ANYWHERE.

Questcare Telehealth uses state-of-the-art telemedicine technology to deliver high-quality specialty physician services to patients all over the country.



Questcare Telehealth provides an enhanced complement of services to its clients through technology and improved access to specialty care across multiple disciplines:

- Neurology
- Critical Care
- OB / Gyn
- Pediatrics
- Psychiatry
- Emergency Medicine
- Pulmonology
- Burn Care
- Orthopedics
- Direct to Consumer

Questcare Telehealth Highlights:

- Custom-built, turnkey programs with competitive pricing
- Enhanced quality of care with the implementation of evidence-based, protocol-driven care
- Stable, dedicated team of providers
- Physician response times within 5 minutes by phone and 15 minutes by camera to promote optimal patient outcomes
- Improved continuity of care through physician-to-physician communication and collaboration
- Access to broad network of care providers that can support program growth and expand quickly and effectively
- Elimination of unnecessary transfers, improving revenue and reducing travel hardships placed on patients and families
- Seamless transfer to facilities within a hospital's network when a higher level of care is warranted
- Potential reduction of average length of stay through immediate availability of a specialist



Questcare Telehealth's Tele-ICU services provide high-quality critical care in rural and underserved communities throughout the country. This service allows hospitals to ensure consistent coverage of the critical care unit, resulting in enhanced quality of care for the patient and improved outcomes.

Questcare Telehealth's Tele-ICU program offers:

- Custom-built programs ranging from 24/7 to supplemental coverage
- Participation in multi-disciplinary rounds
- Consistent, evidence-based, protocol-driven care
- Assistance for protocol and care pathway development
- Increased patient retention at your facility with expanded ICU coverage
- Improved patient satisfaction
- Decreased length of ICU stay, leading to enhanced bed utilization
- Increased continuity of care



THE TELE-ICU PROGRAM PROCESS





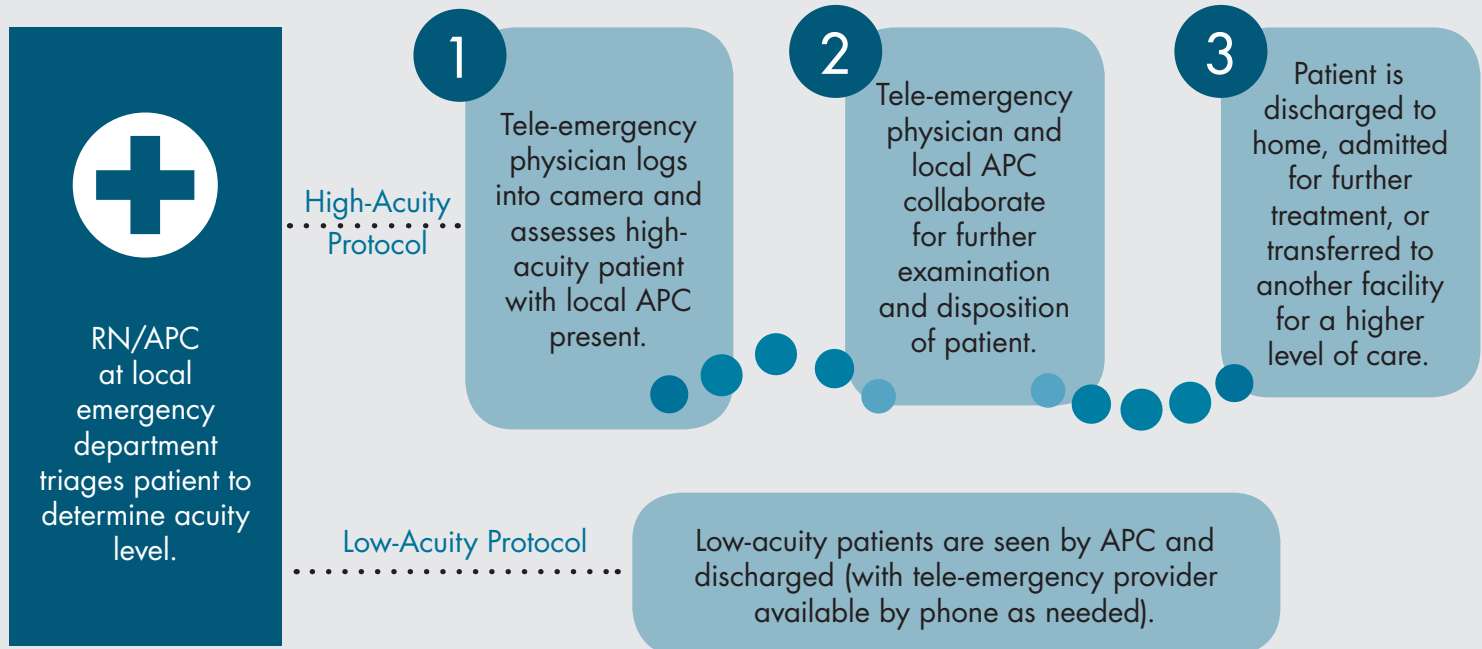
Questcare Telehealth's emergency program brings high-quality, efficient emergency medical care to patients and hospitals in rural and underserved communities throughout the country. Questcare offers an affordable solution to many of the staffing issues faced by lower-volume and rural facilities.

Questcare Telehealth's emergency medicine program offers:

- Custom-built, turnkey emergency medicine programs
- 24/7 access to board-certified emergency physicians
- Questcare advanced practice clinicians (NP/PA) to staff your emergency department
- Elimination of unnecessary patient transfers
- Reduced emergency department operating costs
- Access to broader Questcare network of facilities and providers, offering enhanced multi-specialty care for local patients



THE TELE-EMERGENCY PROGRAM PROCESS





Questcare Telehealth brings a neurologist into the hospital via two-way camera to diagnose patients with acute stroke and neurological symptoms, permitting quick treatment.

Questcare Telehealth's neurology program offers:

- Flexible coverage to fit the needs of each facility
- Response times within 5 minutes by phone and 15 minutes by camera
- Consistent, evidence-based, protocol-driven care
- Easier path to primary stroke center accreditation
- Reduction in door to needle times for tPA administration
- Increased tPA administration rates for qualified stroke patients
- Improved continuity of care for general neurology patients
- Increased patient retention at your facility
- Improved clinical outcomes for neurology patients



Questcare's neurologists are board-certified in neurology and specialize in neurohospitalist medicine.

THE TELE-NEUROLOGY PROGRAM PROCESS

